

Rochester Riverside

# ROCHESTER RIVERSIDE NEWSLETTER

## Works in Progress

### Block 1A - 32 Apartments

The external facade is nearing completion. Scaffold striking works have commenced.

### Block 1C - 14 Apartments

External & Internal works are nearing completion.

### Houses 1 to 17

First residents have moved in. Remaining houses are in the various stages of completion.

### Hotel - 81 Bed

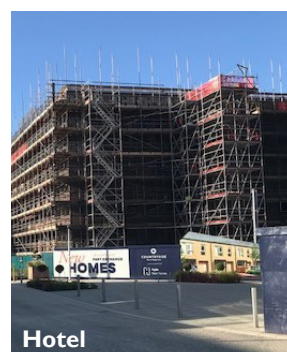
External envelope of the building is nearly complete. Internal works are well underway.



Block 1A



Block 1C



Hotel

### Works in Progress Recap:

- Enabling works to the former Coach Park.
- 489 homes are contained within Phases 1-3. (Phase 1-2 currently under construction)
- 81-bedroom hotel operated by Travel Lodge.
- Planning application for a new primary school.

## Anticipated Works: July & August

Currently work is underway to install utility supplies, to connect new services to the Rochester Riverside development, to the existing services withing Gas House Road.

Drainage works have commenced within the former Coach Park.

Countryside will be commencing with diversions to Gas House Road, a Temporary Traffic Road Order is currently with Medway Council for final approval. Before commencing these works we will meet with local stakeholders to ensure that any questions are answered in respect of the works.

## Community News

A gallery event was held on 22 June, for the local children who participated in the 'Street Photography Project', in the Rochester Riverside Marketing Suite. Their family, friends and members of the community joined the celebration.

Artist Katayoun Dowlatshahi, commissioned by FrancisKnight to produce some of the public realm art work on Rochester Riverside, created a 'bug house building' workshop for pupils at St Margaret's at Troy Town School.

Stay up to date with all community projects:  
[www.rochesterriversidecommunity.com](http://www.rochesterriversidecommunity.com)

## Contact Us

If you have any queries regarding the development, please contact Susan Saunders  
Community Liaison Officer  
[Susan.Saunders@cpplc.com](mailto:Susan.Saunders@cpplc.com)